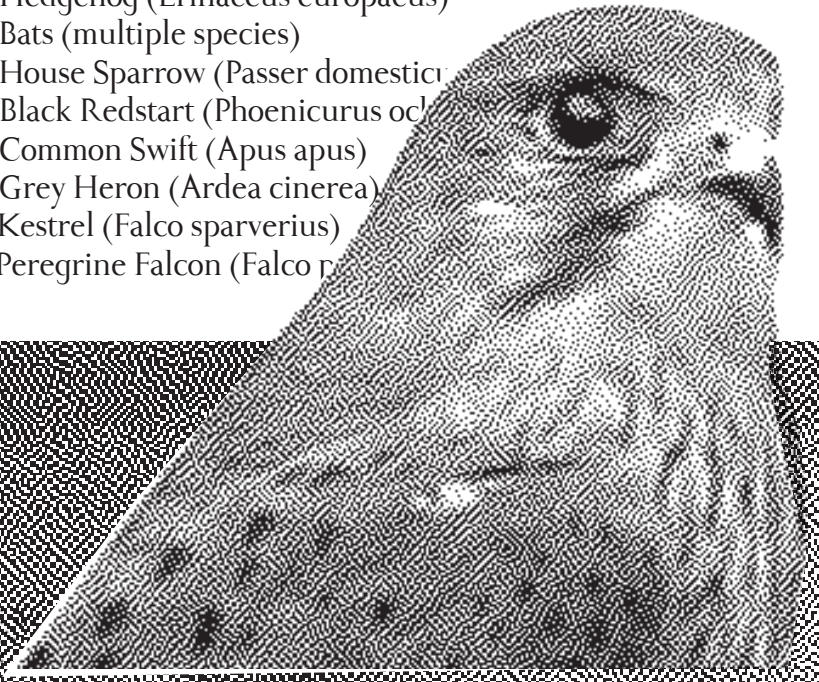


HOW DID THE ANIMAL CLIENT LIVE ON THE LAND OF LONDON BEFORE HUMAN HABITATION?

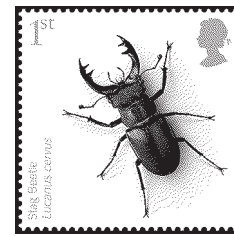
WHAT CAN WE DO OR DESIGN FOR THE CITY OF LONDON TODAY TO WELCOME THEM BACK?

Native London wildlife

- 8.01 Bees (multiple species)
- 8.02 Stag Beetle (*Lucanus cervus*)
- 8.03 Common Frog (*Rana temporaria*)
- 8.04 Hedgehog (*Erinaceus europaeus*)
- 8.05 Bats (multiple species)
- 8.06 House Sparrow (*Passer domesticus*)
- 8.07 Black Redstart (*Phoenicurus phoenicurus*)
- 8.08 Common Swift (*Apus apus*)
- 8.09 Grey Heron (*Ardea cinerea*)
- 8.10 Kestrel (*Falco tinnunculus*)
- 8.11 Peregrine Falcon (*Falco peregrinus*)



ANIMAL ESTATES
London HQ
13 Oct 2011
20 Jan 2012



at ARUP Phase 2
8 Fitzroy Street, London W1T 4BJ

OPENING EVENT*: 'Meet the Clients'
Thursday 13 October 2011, 6.00pm—8.30pm

* Produced in collaboration with the inmidtown Habitats Competition run by the Architecture Foundation and inmidtown

MORE INFORMATION
london@animalestates.org
www.animalestates.org

BIRDS,

MEET THE CLIENTS

PART I: PETER HOLDEN will speak on London's Common Swifts and House Sparrows.

A senior RSPB manager for over 40 years, ornithologist and wildlife expert Peter Holden has written many books on birds, including the RSPB Handbook of British Birds.

RICHARD JONES will speak on London's bees.

Entomologist Richard Jones has been fascinated by wildlife since a childhood exploring the South Downs and Sussex Weald; he now carries out invertebrate surveys, and writes about insects for BBC Wildlife Magazine and Gardeners' World.

KELLY GUNNELL will speak on London's bats.

Kelly Gunnell works for the Bat Conservation Trust as the Built Environment Officer with the remit to facilitate solutions for bat conservation in the construction sector and urban areas.

& BEES

BATS

